



# MONTHLY MEMBERSHIP PROGRESS REPORT

District 4 C1

Results as of: 03/31/2018

GMT: HOWARD HUDSON

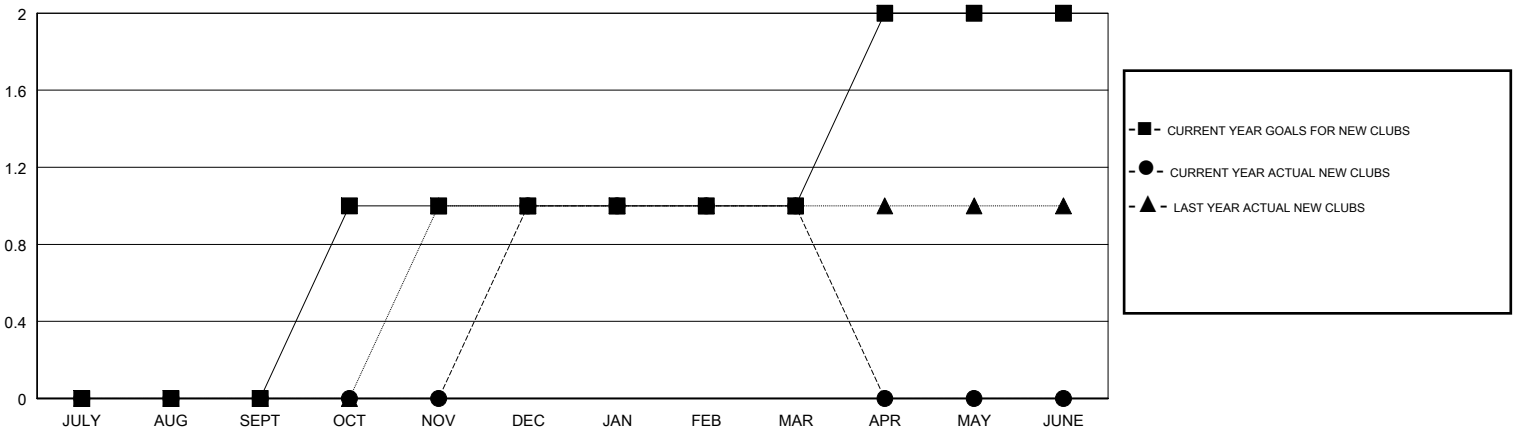
LOCATION CALIFORNIA

GMT CA

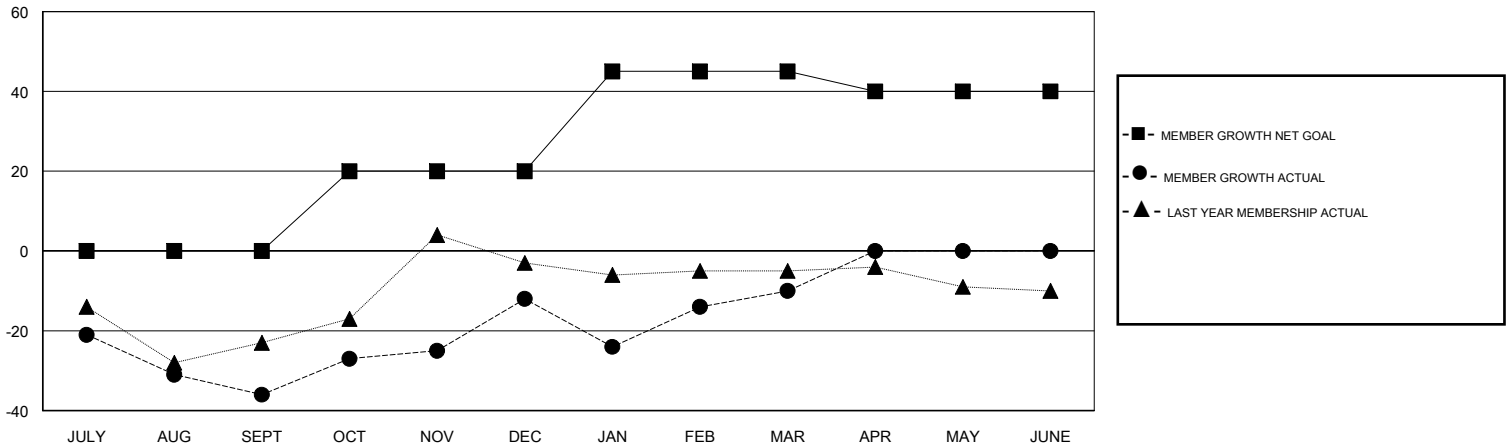
Clubs			
RESULTS FOR 2017-2018			
QUARTER	NEW CLUB GOAL	NEW CLUBS	DROPPED CLUBS
JULY/AUG/SEPT	0	0	0
OCT/NOV/DEC	1	1	0
JAN/FEB/MAR	0	0	0
APR/MAY/JUNE	1	0	0

Members			
RESULTS FOR 2017-2018			
QUARTER	MEMBER GROWTH NET GOAL	MEMBER GROWTH ACTUAL	DROPPED MEMBERS ACTUAL (including transfers)
JULY/AUG/SEPT	0	25	56
OCT/NOV/DEC	20	48	23
JAN/FEB/MAR	25	43	36
APR/MAY/JUNE	-5	0	0

GOALS AND ACTUAL NEW CLUBS CUMULATIVE



GOALS AND ACTUAL MEMBERS CUMULATIVE



DROPPED CLUBS: 0	30 CLUBS OF 47 ADDED 1 OR MORE NEW MEMBERS	<u>GENDER DISTRIBUTION</u> MALE 710 (66.05%) FEMALE 365 (33.95%) Women Percentage Fiscal Year Goal: 35%
<u>DROPPED MEMBERS</u> DECEASED 21 CLUB CANCELLED 0 OTHER 94 TOTAL 115	<a href="#">CLICK HERE FOR CUMULATIVE MEMBERSHIP DATA</a>	TOTAL FAMILY UNIT MEMBERS 227 FAMILY MEMBERS PAYING HALF DUES 115